



11 Briarwood Road

Aigburth, Liverpool, L17 6DD

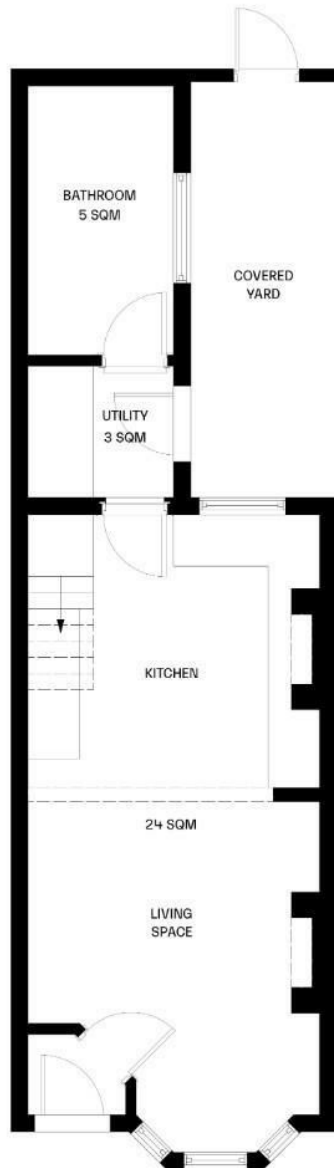
Offers over £210,000



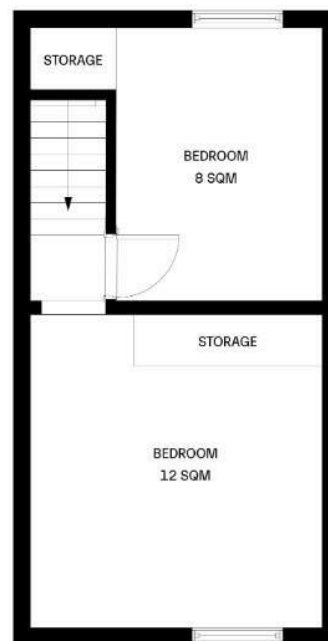
11 Briarwood Road

Aigburth, Liverpool, L17 6DD

Offers over £210,000



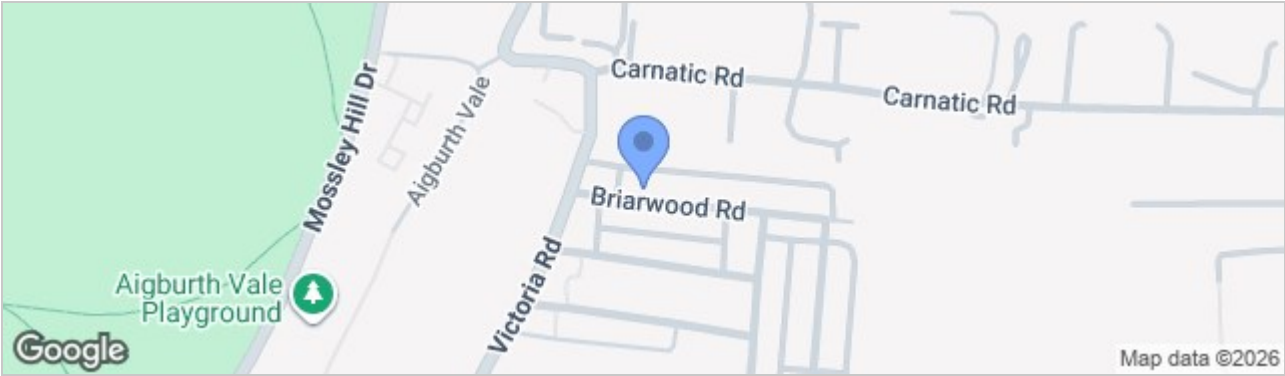
GROUND
FLOOR



FIRST
FLOOR



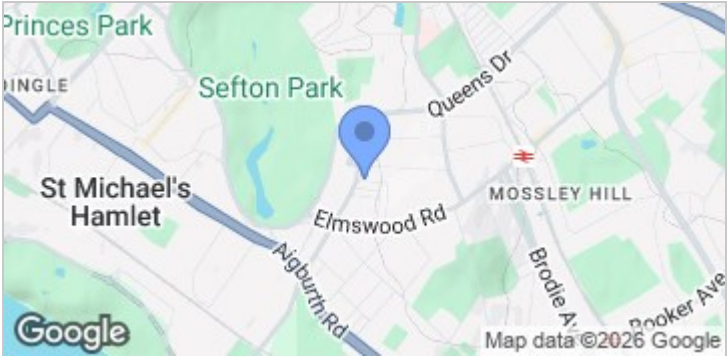
Road Map



Hybrid Map



Terrain Map



- **SUPERBLY PRESENTED THROUGHOUT**
- **HIGHLY SOUGHT AFTER L17 LOCATION**
- **TWO DOUBLE BEDROOMS**
- **OPEN PLAN KITCHEN & DINING ROOM**
- **STYLISH FAMILY BATHROOM**
- **STONE'S THROW FROM SEFTON PARK**
- **EXCELLENT LOCAL SCHOOLS**
- **CLOSE PROXIMITY TO A RANGE OF TRANSPORT LINKS**

Viewing

Please contact our Allerton Office on 01516013003 if you wish to arrange a viewing appointment for this property or require further information.

These particulars, whilst believed to be accurate are set out as a general outline only for guidance and do not constitute any part of an offer or contract. Intending purchasers should not rely on them as statements of representation of fact, but must satisfy themselves by inspection or otherwise as to their accuracy. No person in this firm's employment has the authority to make or give any representation or warranty in respect of the property.

Energy Efficiency Graph

